


DISPLAYS. OPERATIONS. REVENUE.

iFIDS

www.ifids.com



Providing class-leading airport management systems and solutions since 2000.

iFIDS is a provider of fully browser-based operational, business and flight information management system solutions that increase airport operational and business efficiency while improving the passenger experience.



TABLE OF CONTENTS

- MODULES: OPERATIONS 4
- MODULES: DISPLAYS..... 6
- MODULES: REVENUE 7
- SYSTEM ARCHITECTURE 8



Flight Status Update Automation Module

Enables acceptance of flight status messages from third party flight movement data sources including direct from airlines and third-party flight status data aggregators.



Flight Schedule Load Automation Module

Enables periodic in-advance electronic schedule loading facilities using schedule data from third party data providers such as OAG and Innovata.

DEPARTURES

Come Back Sooner!

Flight	Destination	ETD	Weather	Status	Gate
allegiant	1548 Fort Wayne Intl	1:45 PM		Departed	3
allegiant	1615 Rockford	3:40 PM		On Time	6
allegiant	1576 Des Moines Intl	3:15 PM		On Time	6
allegiant	1562 Harrisburg	5:50 PM		On Time	5
allegiant	1341 Cincinnati	8:41 PM		On Time	3

ARRIVALS

WELCOME TO FLORIDA

Flight	Origin	ETA	Status	Bags
allegiant	1673 Theodore Francis Green	1:18 PM	On Time	A
allegiant	1601 Albany	2:06 PM	On Time	A
allegiant	1680 Pittsburgh	5:00 PM	On Time	A
allegiant	1571 Belleville IL	6:39 PM	On Time	A
allegiant	1655 Fort Wayne Intl	7:16 PM	On Time	A

Be at the front of the line, every time, with **complimentary priority boarding!**

Ask your flight attendant how!

Introducing the Allegiant World Mastercard®

11-Jul-2019 2:10 PM

Welcome to Punta Gorda Airport!



Asset Scheduling and Conflict Resolution Module

This module exposes gate, podium and baggage belt scheduling and current-day conflict resolution graphical plot utilities.



Public Announcement (PA) System Integration Module

Activates the user-interfaces and data integrations necessary to send either ad-hoc messages or automated flight status messages to your public address system.



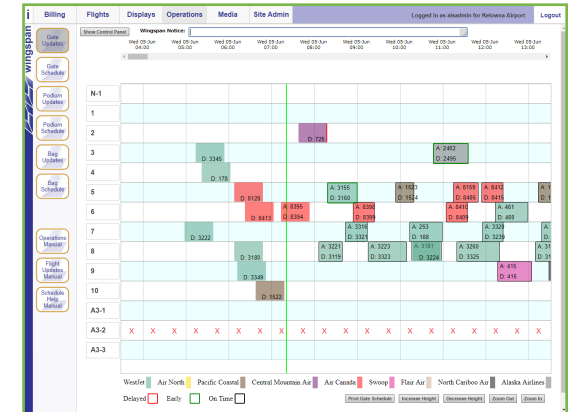
Baggage Belt Assignment Module

Allows use of the touch screen baggage belt allocation applications designed for touch screen input devices in the baggage handling area, enabling belt assignment and first bag / last bag identification.



Check-in Counter Assignment Module

Allows use of check-in counter screen assignment and scheduling utilities. Automated screen display tied to flight schedule and status is fully supported.



iFIDS						
29-Mar-2019 ARRIVALS						
Flight	Origin	Time	ETA	Bags	Status	
American Airlines 2412	CHICAGO	11:03	11:03	1	Arrived	
American Airlines 1604	MIAMI	11:25	11:25	1	On Time	
UNITED 528	PORTLAND	11:33	11:33	3	On Time	
American Airlines 2333	MIAMI	12:00	12:00	1	On Time	
UNITED 1204	HOUSTON	12:02	12:02	3	On Time	
DELTA 2746	COLUMBUS	12:06	12:06	2	On Time	
UNITED 1545	HOUSTON	12:20	12:20	3	On Time	
American Airlines 2711	DALLAS	13:41	13:41	1	On Time	
Select Response	Default	1	2	3	None	Save



Information Displays Modules

Modules exist for flight, gate, baggage, check-in and high-brightness outdoor LED display management.

- Multi-format (FIDS, BIDS, GIDS, RIDS, Digital Advertising, Touch Screen)
- Drag-and-drop display design
- Automated schedule updates/Manual schedule updates
- Visual effects (gradients, transparency, rounded corners)
- Video, Image, Web content
- Multilevel security
- Visual Paging to comply with Disabilities Acts
- Simple/Inexpensive hardware
- Multilingual displays
- Idle pages content
- Full Image Server for scheduled advertisements
- Terminal Maps in display and touch screen options
- Integrated Gate Management operational displays
- Streaming content (news, ad network content)
- Destination weather
- Baggage Input Displays/Devices
- Display, Web & Mobile Cross-browser supported
- Mobile FIDS for Taxi/Shuttle
- Hospitality FIDS for hotels
- Wayfinding



Image Server Multimedia Advertising Module

Allows access to the image/video repository and media scheduling features.

Flight	Destination	Scheduled	Estimated	Gate	Status
5853	Denver Intl	11:20 AM	11:09 AM	3	Departed
2244	Dallas/Fort Worth	2:22 PM	2:22 PM	2	On Time
Next Day					
2182	Dallas/Fort Worth	7:45 AM	7:49 AM	2	On Time
5919	Denver Intl	8:50 AM	8:50 AM	3	On Time



Airport Web Site Tools

The iFIDS solution for allows for simple integration with the airport's web site using screen design tools in the Flight Information Display System or via a simple .xml data feed to your web site.



Aircraft Landing Fees and Aircraft Parking Fees Billing Module

The aircraft landing fees and aircraft parking fees module automates procedures related to landing fees and parking fees invoice generation, including aircraft ownership research. Accounting/finance system integration is available.

FEATURES

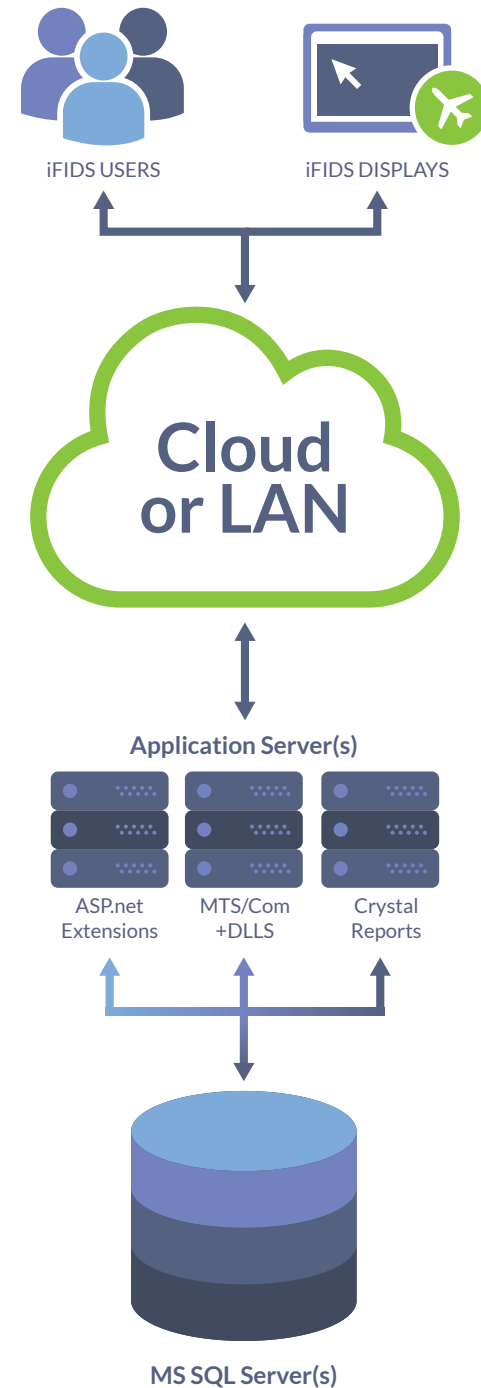
- Automated import of landings data
- Automated applications of aircraft specific billing rules
- Automated invoice creation
- Export function to accounting software
- Aircraft ownership search in North American databases
- Complete control over client database and billing rules
- Over 12 reports to assist with audit control and operations/ forecasting
- Application of landing, terminal, bridge, apron & parking fees
- Miscellaneous charges options
- Duplicate landing recognition
- Add-on module for Lease/Concession management for counter space rental



Lease / Space / Concession Revenue Management Module

The lease / space / concession revenue management module is both a contract management solution and a recurring invoice generation solution. Many time saving features are included such as automated email notification on upcoming expiration dates and accounting/finance system integration is available.

iFIDS is a true browser-based solution, allowing users to access the system through a web browser. The application can be installed on a web-server on your network or can be provisioned as a turn-key cloud-hosted service. Because there is nothing to install on individual user computers more individuals will have access to the system and end-user IT maintenance considerations are virtually removed.



The logo for iFIDS features the lowercase letter 'i' in white with a yellow dot, followed by the uppercase letters 'FIDS' in a bold, white, sans-serif font. The background of the entire image is a vibrant blue sky with scattered white clouds. A subtle pattern of light blue circles is visible in the lower-left quadrant.

iFIDS

Email: sales@ifids.com

Call: +1 807 625 9260

www.ifids.com